

Promi-DBS™

Developer Board for Promi-ESD/ESD-02

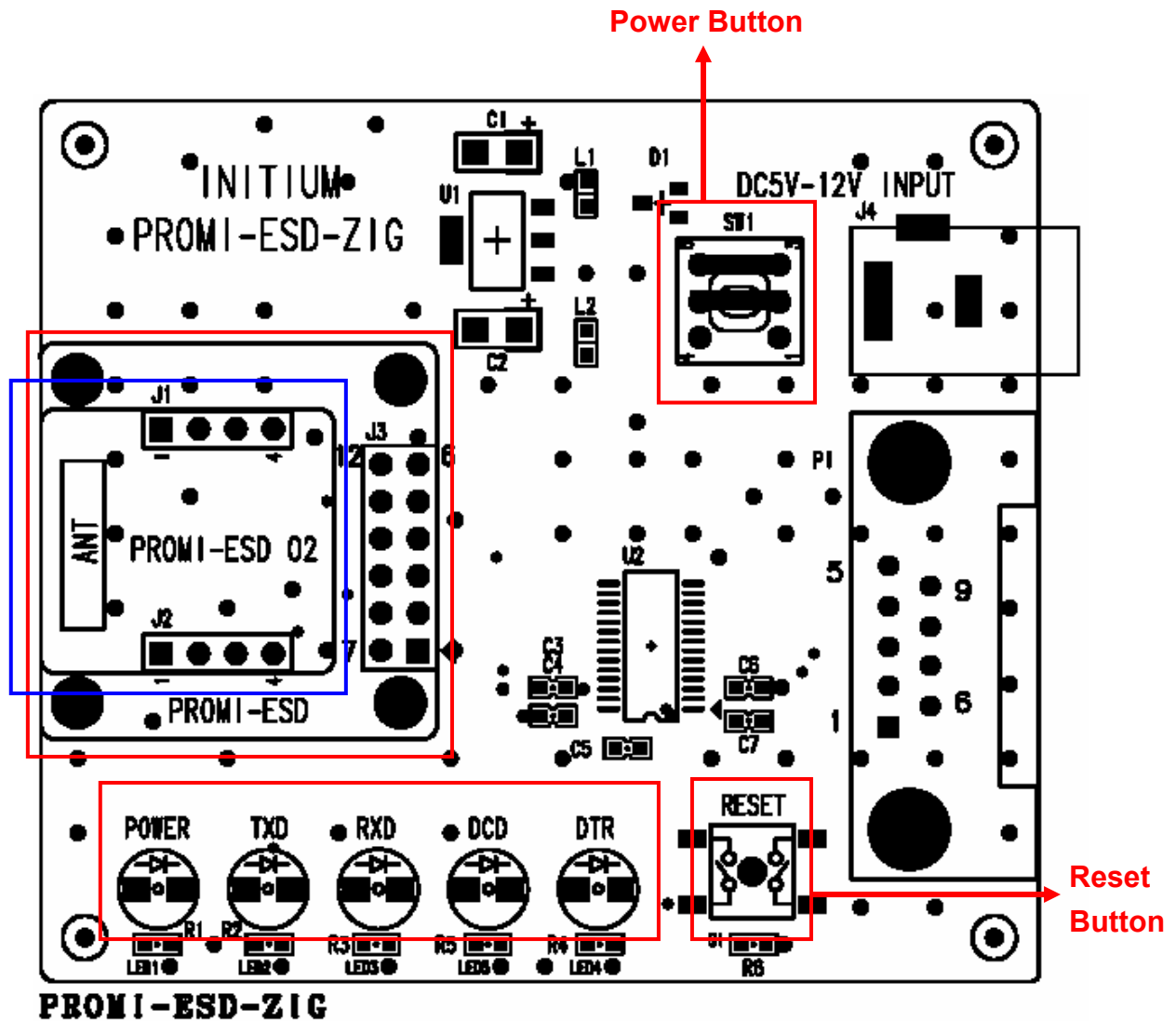
< User Manual >
Preliminary Version



Contents

1. With Promi-ESD	3
1.1 How to install	
1.2 LED operation with Promi-ESD	
2. With Promi-ESD-02	5
2.1 How to install	
2.2 LED operation with Promi-ESD-02	
3. How to Reset	7
4. Other Technical Questions:	7

Dimension of Promi-Developerboard



<Dimension of Promi-DBS>

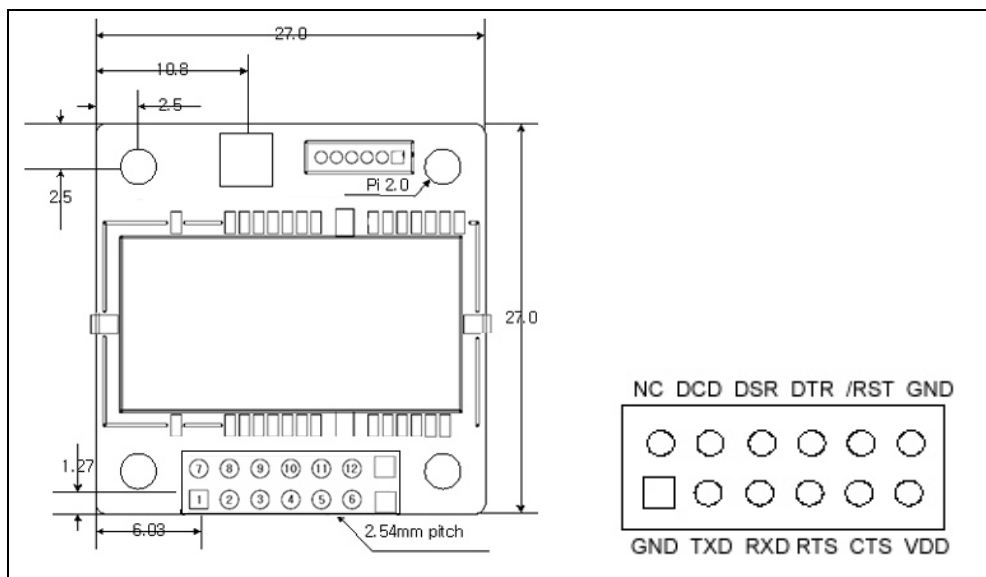
NOTE:

Before to start, after installing Promi-ESD or Promi-ESD-02 on the developer board, Power button should be pressed. Please confirm that Power LED is ON in Red color.

1. With Promi-ESD

Promi-ESD is Class 1 Bluetooth OEM board, with external cable and stub antenna.

1.1 How to install



<Pin Assignment of Promi-ESD>

Pin no.	Pin name	Direction	Description	Signal Level
1	GND	I	Power Ground	Ground
2	TXD	O	UART data out	TTL
3	RXD	I	UART data input	TTL
4	RTS	O	UART Ready to Send	TTL
5	CTS	I	UART Clear to Send	TTL
6	VDD	I	DC input (3.0 ~ 3.3V input)	Power
7	NC	I	No Connection	TTL
8	DCD	O	Data Carrier Detect	TTL
9	DSR	I	Data Set Ready	TTL
10	DTR	O	Data Terminal Ready	TTL
11	/RST	I	Reset (Active Low)	TTL
12	GND	I	Power Ground	Ground

1.2 LED Operation with Promi-ESD

LED operation of Developer Board with Promi-ESD, Class 1, as follows:

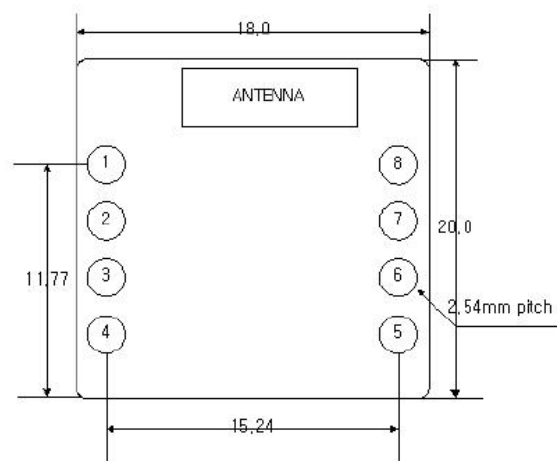
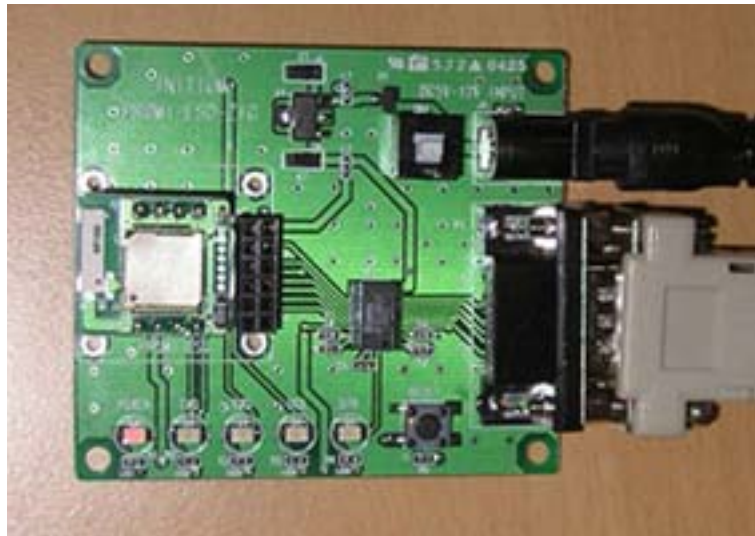
Status	Power	TxD	RxD	DCD	DTR*
When Power is supplied and power button is pressed	ON	OFF	OFF	OFF	OFF
When the counter device is sending a signal	ON	Blinking	OFF	ON	ON or OFF
When the Promi-ESD installed is sending a signal	ON	OFF	Blinking	ON	ON or OFF
During Bluetooth connection only	ON	OFF	OFF	ON	OFF
During Bluetooth connection & Application software by counter part (ex. HyperTerminal) is operating.	ON	OFF	OFF	ON	ON or OFF

* Note: About DTR LED, if the counter part device is Promi-SD101, which does not have DTR/DSR lines, DTR LED on the board will not be lit.

2. With Promi-ESD-02

Promi-ESD-02 is Class 2 Bluetooth OEM board, with chip antenna.
DTR/DSR lines are not available with this model.

2.1 How to install



Pin no.	Pin name	Direction	Description	Signal Level
1	GND	I	Power Ground	Ground
2	VDD	I	DC input (3.0 ~ 3.3V input)	Power
3	STATUS	O	Status	TTL
4	/RST	I	Reset (Active low)	TTL
5	CTS	I	UART Clear to Send	TTL
6	RTS	O	UART Ready to Send	TTL
7	TXD	O	UART data out	TTL
8	RXD	I	UART data input	TTL

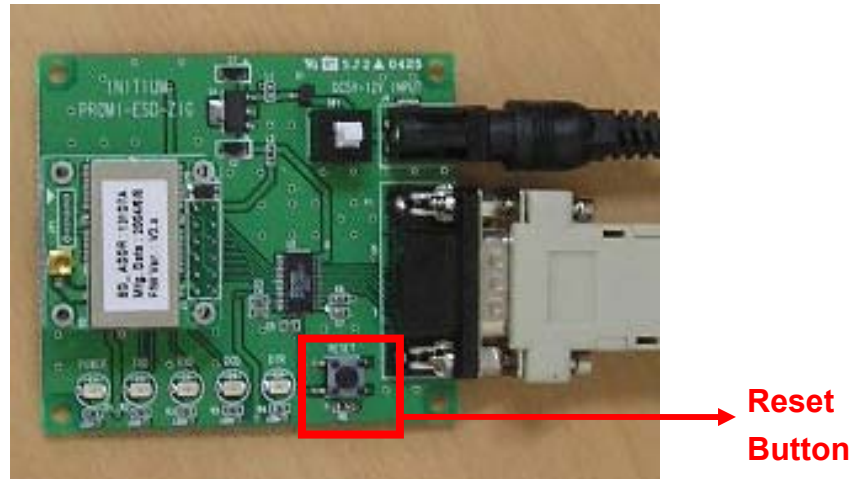
<Pin Assignment of Promi-ESD-02>

2.2 LED Operation with Promi-ESD-02

LED operation of Developer Board with Promi-ESD-02, Class 2, as follows:

Status	Power	TxD	RxD	DCD	DTR*
When Power is supplied and power button is pressed	ON	OFF	OFF	ON	OFF
When the counter device is sending a signal	ON	Blinking	OFF	ON	OFF
When the Promi-ESD installed is sending a signal	ON	OFF	Blinking	ON	OFF
During Bluetooth connection only	ON	OFF	OFF	OFF	OFF

3. *How to Reset*



Press the Rest button for about 3~4 seconds to RESET the installed Promi-ESD/Promi-ESD-02.

4. *Other Technical Questions:*

Please email to info@hantz.com for full technical support.