



## BCM 2604 Linear imager



## CMOS Barcode scanner

- 300 ft (100 m) operational range
- Ergonomic design
- Audible & visible indicators



The BCM2604 L is a member of the 2604 Series. Its gun-shaped and protected form factor offer efficient use of the scanner in multiple environments.

The 2604 series are class 1 products, allowing barcodes to be transmitted up to 100 meters.

**Thanks to the CMOS technology,** the BCM2604L perfectly fits to applications that require aggressive scanning or that require to scan through glass or on screens.



Scanning distance: 1.5 to 19 in (4 to 50 cm)

### About Baracoda

Baracoda is the world's first and only manufacturer offering a full range of Bluetooth barcode scanners. Baracoda's field-proven wireless and barcode scanning solutions provide its customers and partners with efficient tools that are innovative, reliable and convenient to use, simplifying integration for a quick Return On Investment.



# BCM 2604 L Specifications

## STANDARD - REGULATORY

Fully compliant with Bluetooth® 1.1 Standard  
Gap & SPP profiles. CE - FCC - Bluetooth qualified

## USER INTERFACE

Green LED  
Buzzer

## BLUETOOTH RANGE

Class 1: 300ft - 500 ft (100m - 150m)

## OPERATING MODES

Real Time  
Master

## SCAN ENGINE

Reading technology CMOS  
Reading distance 1.5 to 19 in (4 to 50 cm)  
Scan rate 200 scans/s  
Scan angle 40°

## DECODING CAPABILITIES

Bar Codes Supported UPC-A/E, EAN-8/JAN-8, EAN-13/JAN-13, EAN128,  
Code 32, Full ASCII code 39, code 39, code 93, Interleaved  
2 of 5, Matrix 2 of 5, Standard  
2 of 5, Codabar, Code 128, MSI/Plessey code,  
Telepen, Code 11, Linear RSS, PDF 417

## POWER

2 x AAA NimH - 2100 mAh rechargeable  
Battery life: more than 12 000 scans

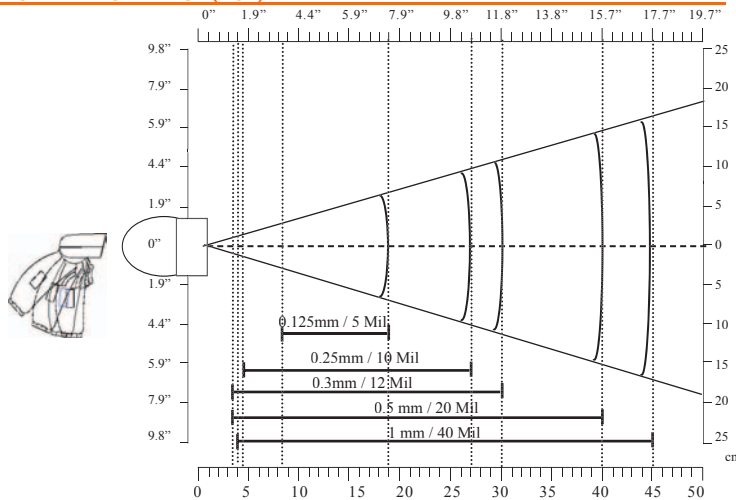
## PHYSICAL

Length 5.63 in (143 mm)  
Width 3.10 in (78.8 mm)  
Height 6.08 in (154.5 mm)  
Weight 6.35 oz (180 g) without batteries

## ENVIRONMENT

Operating temperature 32°F (0°C) - 104°F (40°C)  
Storage temperature 14°F (-10°C) - 158°F (70°C)  
Operating humidity 5 - 95% (Non condensing)  
Shock Several 3.3ft (1m) drops to concrete  
Ambient light Full darkness to sunlight

## TYPICAL PERFORMANCE (DOF)



## Package content



1 BCM 2604 L  
2 rechargeable batteries  
1 Charger  
1 CD with all the documentation and software needed.

## Available accessory



### Protective boot:

The protective boot for the 2604 Serie is made of ruggedised high density foam. While the protective boot does add some bulk to the scanner, its shock protection value compensates for this size increase. The protective boot also offers a small ring that can be attached to a lanyard or a retractable badge reel. It is ideal for mobile workers who need a rugged product.

## General features

### One click connectivity products:

Just switch on your scanner to get connected!

### No data loss guarantee:

Barcodes are stored within internal memory until they are acknowledged by the application.

### Auto Reconnection:

If you scan barcodes out of the radio range, they will be stored in memory and automatically downloaded when getting back into range.

### Intuitive user interface:

- Only one button to switch on, connect and scan barcodes
- Multi color led for connection and battery status
- Sound beeps for successful scanning.

### Platforms compatibility:

Baracoda provides users with user-friendly software (BaracodaManager) and provides developers with state of the art APIs to ease the integration on the following mobile platforms:

- PC
- PPC 2002/2003; CE.NET; Palm OS
- Symbian (Mobile Phones)
- Most Bluetooth devices (printers, access points, ...)

### Plug and Play Solution

Real Plug& Play solution with Baracoda Serial Dongle (compatible with all devices equipped with a RS232 port)